

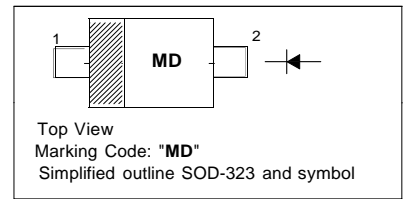
## SILICON SCHOTTKY BARRIER DIODE

### Applications

- Low voltage high speed switching

### PINNING

PIN	DESCRIPTION
1	Cathode
2	Anode



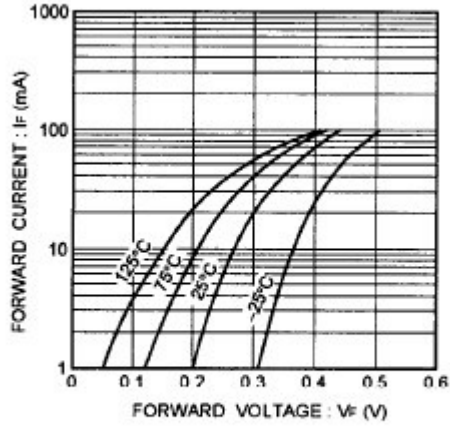
### Absolute Maximum Ratings ( $T_a = 25\text{ }^\circ\text{C}$ )

Parameter	Symbol	Value	Unit
Peak Reverse Voltage	$V_{RM}$	30	V
Reverse Voltage	$V_R$	30	V
Average Forward Current	$I_O$	100	mA
Peak Forward Current	$I_{FM}$	300	mA
Peak Forward Surge Current	$I_{FSM}$	1	A
Power Dissipation	$P_D$	200 <sup>1)</sup>	mW
Junction Temperature Range	$T_j$	125	$^\circ\text{C}$
Storage Temperature Range	$T_{stg}$	- 55 to + 125	$^\circ\text{C}$

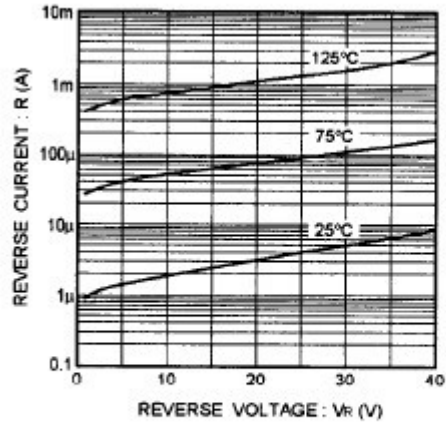
<sup>1)</sup> Mounted on a glass epoxy circuit of board of 20 X 20 mm, pad dimension of 4 X 4 mm.

### Characteristics at $T_a = 25\text{ }^\circ\text{C}$

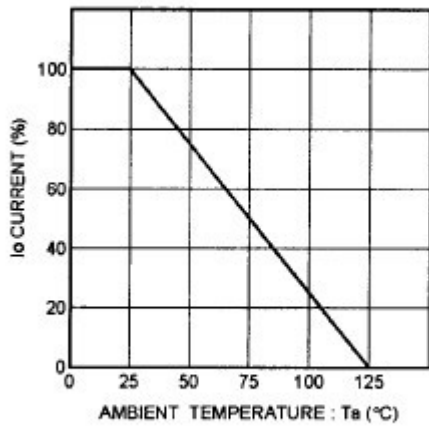
Parameter	Symbol	Typ.	Max.	Unit
Forward Voltage at $I_F = 1\text{ mA}$ at $I_F = 5\text{ mA}$ at $I_F = 100\text{ mA}$	$V_F$	- - -	0.35 0.4 0.55	V
Reverse Current at $V_R = 30\text{ V}$	$I_R$	-	15	$\mu\text{A}$
Total Capacitance at $V_R = 1\text{ V}$ , $f = 1\text{ MHz}$	$C_T$	40	-	pF



Forward characteristics



Reverse characteristics



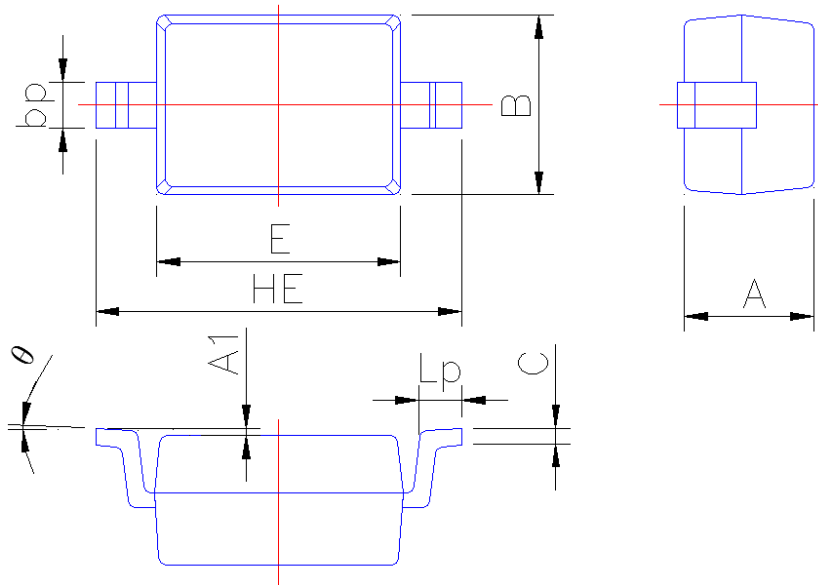
Derating curve  
(mounting on glass epoxy PCBs)



## PACKAGE OUTLINE

Plastic surface mounted package; 2 leads

SOD-323



Symbol	Dimension in Millimeters	
	Min	Max
A	0.95	1.15
A1	0.010	0.100
B	1.20	1.40
bp	0.25	0.40
C	0.09	0.150
E	1.60	1.80
HE	2.30	2.70
Lp	0.20	0.40
$\theta$	0°	5°